

BURIAL BOXES

Dee Veterinary Products' Burial boxes are available in three sizes offering a respectful and dignified solution for handling the remains of a deceased animal.

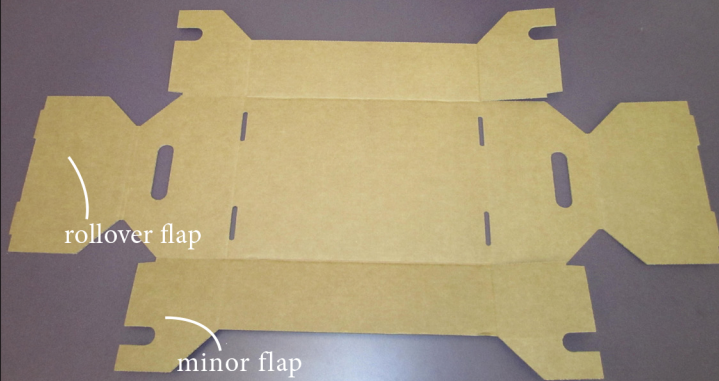


ITEM #	DESCRIPTION	Qty p/Pack	Corrugated Material	Body			Lid		
				Length	Width	Height	Length	Width	Height
3425	Small Burial Box	5	200B	14"	9"	6.3"	14.14"	6.08"	4.06"
3430	Medium Burial Box	5	200B	22.15"	13.14"	8.02"	23.13"	10.08"	4.06"
3435	Large Burial Box	5	44B	31.14"	18"	10.04"	32.12"	14.10"	4.06"

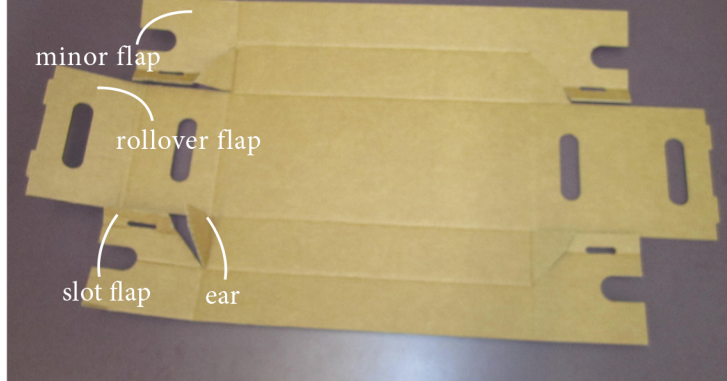
Dee Veterinary Products Base & Lid SETUP INSTRUCTIONS

COMPONENTS LIST:

Base (Steps 1-4)



Lid (Steps 5-9)



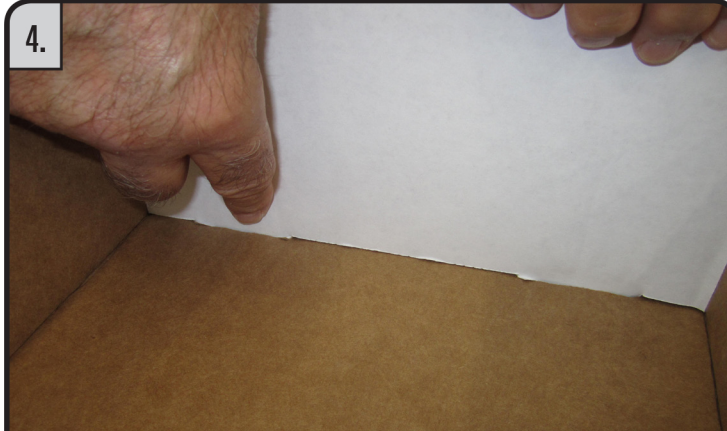
Starting with the "Base" (shown in the components list above), pre-break all score lines. After pre-breaking scores, fold in "minor flaps" on one end to come together.



Once the two "minor flaps" have met in the middle, bring the "rollover flap" up.



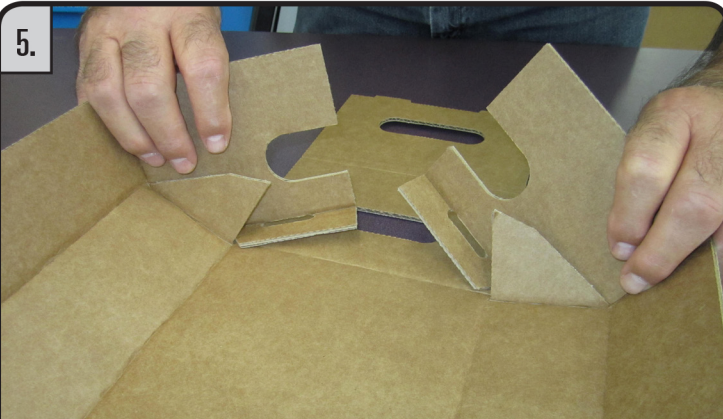
Continue to fold the "rollover flap" over the "minor flaps" to securely lock into place.



Make sure tabs lock into place by pushing them into the slots. Once that is secure repeat steps 1-4 on the opposite side of the "Base".

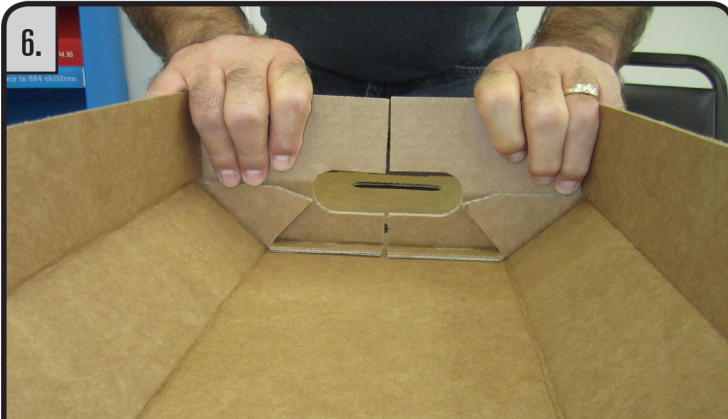
Dee Veterinary Products Base & Lid SETUP INSTRUCTIONS

5.



Now pre-break all score lines on the "Lid" (shown in the components list). After pre-breaking scores, begin to fold "minor flaps" in while making sure the "ears" and "slot flaps" are both folded inside.

6.



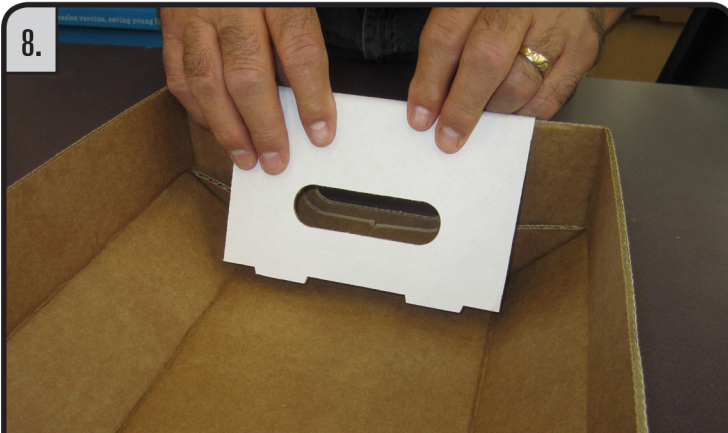
Bring the "minor flaps" together to meet in the middle.

7.



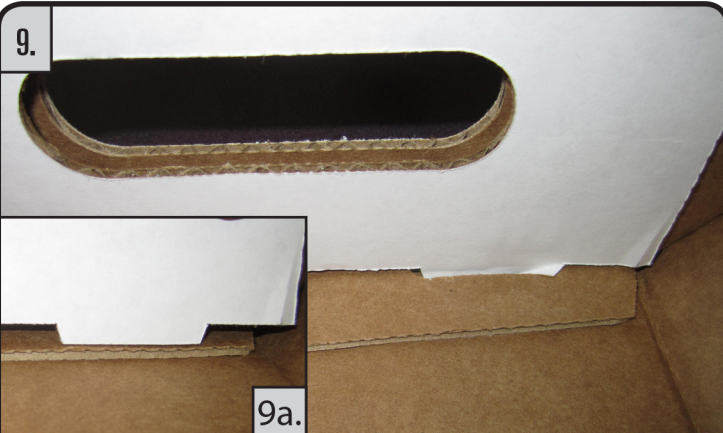
While still holding the "minor flaps" bring the "rollover flap" up.

8.



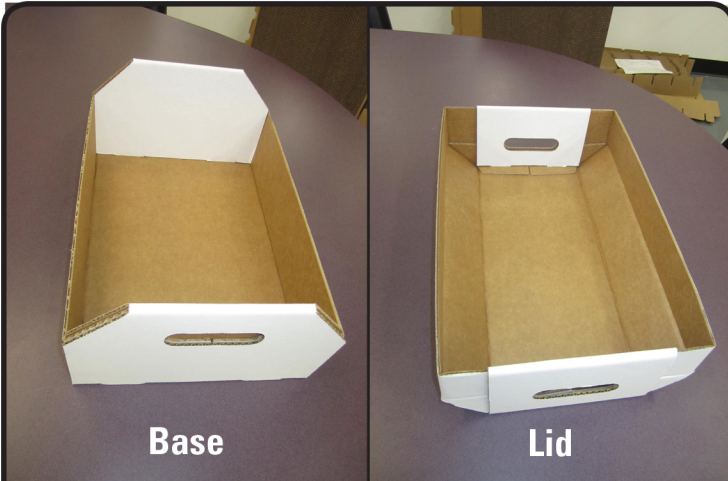
Continue to fold the "rollover flap" over the "minor flaps" and "ears".

9.



9a.

To securely lock the "rollover flap" in place make sure the tab goes on top of the "slot flap" like shown in figure 9a. Once the tabs are on top of the "slot flaps" push in and securely lock the tabs in the slots. Repeat steps 5-9 for the opposite side of the "Lid".



Base

Lid

COMPLETE